

EXHIBITOR INFORMATION 2026



EXHIBITION GUIDE & FAQs

Montsalvat Artist Community acknowledges the Wurundjeri Woi-wurrung people of the Kulin Nation, the traditional owners of the land and waters on which our community is located. We pay respect to their Elders past and present, and recognise the rich traditions and continuing creative cultures of all First Peoples of Australia.

Montsalvat respectfully acknowledges the founding families of Montsalvat, the Jörgensen and Skipper families.

Montsalvat is an artistic community spanning nine decades of continuous practice. Established in 1934, Montsalvat has fostered a deeply connected creative community and provided thousands of painters, sculptors, musicians, philosophers, poets and other makers with the time, space and support to further their creative practice. Once a semi-rural retreat for artists, Montsalvat has evolved into a public hub of creative opportunity — a place where art is made and taught, as well as exhibited and performed. Montsalvat offers art classes, studio spaces and short-term residencies to a wide variety of experienced and aspiring artists, alongside numerous events and private function facilities across three dozen unique, heritage-listed buildings and five hectares of stunning grounds.

Exhibitors pay a **non-exclusive** hire fee to display their artwork in the gallery. Alongside exhibitions, Montsalvat hosts a range of exciting programs including creative events, functions, workshops, meetings and more inside our gallery spaces. This presents an opportunity for the exhibiting artists' work to be viewed by many Montsalvat visitors providing additional exposure. Please note - this may limit public access to the exhibition during open hours. Please call ahead to enquire if the gallery is accessible to plan your visit.

Prior to your exhibition installation, we'll organise a walk-through to help you make the most of the gallery space. Montsalvat's heritage-listed buildings are unique and full of character, with natural climate control, and their distinctive architectural features set them apart from typical 'white cube' gallery spaces.

Image cover page: Matcham Skipper, *Untitled* (bronze medallion depicting Diana the Huntress), n.d.

Hire fees are reviewed annually in line with CPI and sustainable business practice

exhibition@montsalvat.com.au



PREPARE

Here is some info to assist your planning and make the most of your exhibition at Montsalvat:

Exhibition Intentions

Consider your primary goals:

- Showcasing artwork and making sales.
- Presenting a thematic body of work
- Gaining experience in exhibition practice.

Montsalvat is not a commercial gallery. While we attract a diverse audience, not all visitors are prospective buyers.

Choosing the right Gallery Space

Applicants are encouraged to choose a gallery space that suits the scale, intent, and practical needs of their exhibition.

The Barn Gallery

Our flagship exhibition space—ideal for solo exhibitions (with a large body of work), group shows, and installations that benefit from high ceilings. The Barn Gallery accommodates both 2D and 3D works. We have specific locations where floor-based 3D works can be positioned, see floor plan.

The Residents Gallery

A smaller, more intimate space with a deep historical connection to Montsalvat's creative past. This gallery is suited to small group shows, solo exhibitions, or reflective practices and is suitable for both 2D and 3D work.



PREPARE

The Wood Workshop

A practical, flexible space perfect for exhibitions that include 3D works, installations, and experimental media. With its workshop charm and gallery-standard hanging systems, this space is ideal for tactile or object-based art practices.

The Long Gallery

The Long Gallery is a heritage-listed space with distinctive character, positioned beside Montsalvat's ornamental pool. It is primarily designed as a multi-use community space that accommodates events, workshops, and non-exclusive exhibitions. Suitable for 2D artworks only (no plinths or 3D works). Best for community-focused exhibitions.

Installation and De-installation

Installation takes place on Tuesdays between 9:30am and 5:00pm, with de-installation scheduled for Mondays between 9:30am and 12:30pm. These are the designated times provided by the Program Coordinator for setting up and packing down. Exhibitors are responsible for the installation and removal of their own work. All packaging must be taken off-site once installation is complete, and any unsold works collected during de-installation. Due to the scale of the Barn Gallery, installation may extend across both Tuesday and Wednesday if needed.

Exhibitors are welcome to engage their own installation technicians but must ensure they have appropriate insurance in place as required.

PREPARE

Curation

Montsalvat's gallery spaces are not curated by staff, allowing exhibitors the freedom to shape and present their exhibition. Exhibitors are welcome to curate their own show or engage an independent curator to assist with layout, storytelling, and presentation.

If you are a curator interested in proposing an exhibition you are invited to submit an Expression of Interest. We encourage creative approaches that make the most of Montsalvat's unique heritage spaces and foster meaningful connections with our community and visitors.

For all enquiries - email: exhibition@montsalvat.com.au

Exhibition Fees.



Montsalvat

Montsalvat offers two payment options for exhibitors:

- 1. Exhibition Hire Only (Non-Exclusive):** Pay a standard non-exclusive venue hire fee, with no commission on sales. The exhibitor is responsible for their own sales (if applicable).
- 2. Exhibition Hire + Commission (Non-Exclusive):** Opt for a reduced non-exclusive venue hire rate, with a 33.33% commission on sales. Montsalvat will handle the sales process.

**Exhibitions are a minimum of 4 weeks.*

	Hire fee No commission paid to gallery (GST inclusive)	Lower Hire fee Commission paid 33.33% (GST inclusive)
BARN GALLERY	\$4400 (4 weeks)	\$2200 (4 weeks) 33.33% commission
LONG GALLERY	\$2816 (4 weeks)	\$1408 (4 weeks) 33.33% commission
RESIDENTS GALLERY	\$2000 (4 weeks)	\$1080 (4 weeks) 33.33% commission
WOOD WORKSHOP	\$2200 (4 weeks)	\$1320 (4 weeks) 33.33% commission
Plinth Hire	*\$100 per week (flat rate) applies to the entire hire, not per plinth.	<ul style="list-style-type: none">• Exhibitors are welcome to supply their own plinths• Please note that the Long Gallery is not suitable for displaying 3D works.

THE BARN GALLERY



Image: Photographer Dean Atherton - Reflective Journeys
Jo Carroll & Bev Plowman 2022

ABOUT

The Barn Gallery is a unique multi-use, heritage-listed creative venue.

Originally known as “The Red Brick Barn” or “The Boat Shed,” the building was designed by Montsalvat founder Justus Jørgensen and built in three stages starting in 1957. After a fire caused significant damage, the building was largely reconstructed in the 1990s by Hamish Knox. Today, the Barn Gallery features a spacious interior with polished concrete floors, rendered mud-brick walls, elevated windows, natural timbers, chandelier elements designed by Matcham Sipper, and a Yamaha grand piano.

FACILITIES

- Track Lighting Gallery Standard
- Track hanging system
- Double door access for accessible installation
- Rendered mudbrick walls
- A **multi-use** space hosting public events
- Ceiling fans
- Microphone on stage (as required)
- A Yamaha grand piano

ACCESSIBILITY

The Barn Gallery is wheelchair accessible through the front doorway entrance and hosts large rear doors. Accessible toilets are available in the courtyard.

THE BARN GALLERY



Image: Photographer Bronwyn Kidd - Through Her Breath, 2024
featuring Carol Brown, Emma Redding & Monica Lim

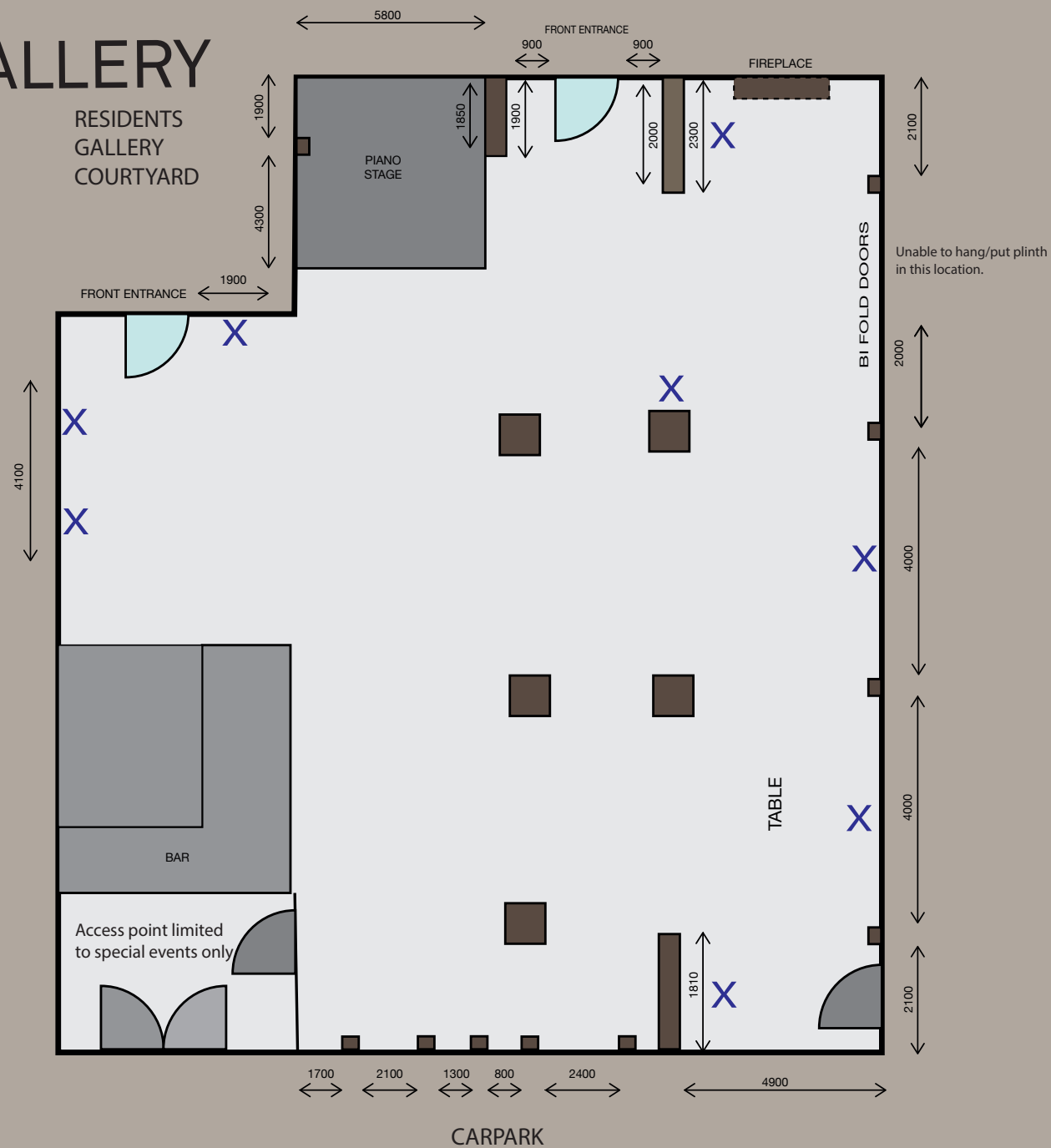
HIRE RATES: Non-exclusive hire (refer to the exhibitor fee page for details).

DURATION: Designated time slots will be provided by the Program Coordinator.

INCLUSIONS FOR THE EXHIBITOR

- Provision of track and gallery hanging system
- Provision of ladders (to be pre-organised with the coordinator)
- Plinths are available for loan/hire
- Sales administration as required
- Use of AV equipment: microphone only
- Marketing copy through online social media channels, Instagram and Facebook, with 25,000+ subscribers
- Printing of artwork room list (catalogue and artist collateral to be organised by exhibitor following proofing from Program Coordinator)
- Administration for artwork sales and online store
- 1 slot in the Montsalvat E-newsletter promotion of 7,500+
- Opening celebrations are optional. Catering arrangements will be outlined by the coordinator.

THE BARN GALLERY



*Dimensions indicate available wallspace.
These floor plans have not been drawn to scale.
Check on site for any crucial dimensions.

3D artwork must be displayed on the plinths
allocated in the floorplan



THE RESIDENTS GALLERY



Image: Photograph by Hilary Walker -
commissioned by Public Journal

exhibition@montsalvat.com.au

ABOUT

The Residents Gallery, also known as Betty Roland's House, aka Helen's Residence - built c.1971
Originally a chook house, then a school for the Colony's children, the space became a dwelling for Betty Roland and then Helen Skipper.
Designed by Justus Jorgensen, funded and built for Betty Roland, author of *The Eye of the Beholder*, the Resident's Gallery is a unique, heritage-listed exhibition space.

FACILITIES

- Track Lighting Gallery Standard
- Track hanging system
- Double entrance points
- Located in the Barn Gallery courtyard and The Meeting Pool cafe courtyard
- Courtyard surrounded by Matcham Skipper sculptures

ACCESSIBILITY

The Residents Gallery is situated outside the Barn Gallery in the courtyard and is accessible through the reception courtyard, with convenient access to toilets.

THE RESIDENTS GALLERY



Image: Courtesy of Montsalvat

HIRE RATES: Non-exclusive hire (refer to the exhibitor fee page for details).

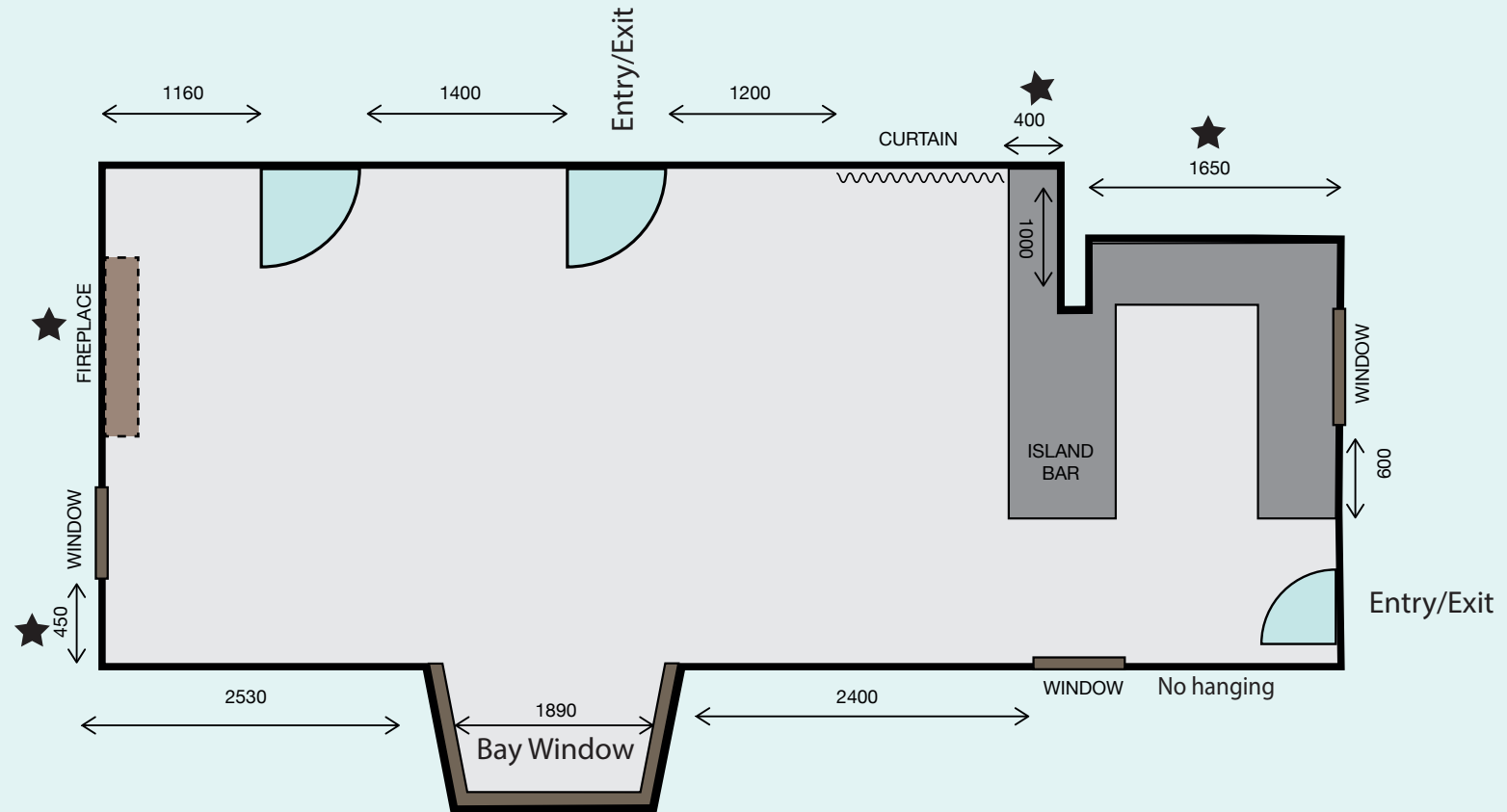
DURATION: Designated time slots will be provided by the Program Coordinator.

INCLUSIONS FOR THE EXHIBITOR

- Provision of track and gallery hanging system
- Provision of ladders (to be pre-organised with the coordinator)
- Plinths are available for loan/hire
- Sales administration as required
- Marketing copy through online social media channels, Instagram and Facebook, with 25,000+ subscribers
- Printing of artwork room list (catalogue and artist collateral to be organised by exhibitor following proofing from Program Coordinator)
- Administration for artwork sales and online store
- 1 slot in the Montsalvat E-newsletter promotion of 7,500+
- Opening celebrations are optional. Catering arrangements will be outlined by the coordinator.

THE RESIDENTS GALLERY

built c. 1971



*Dimensions indicate available wallspace and width of space (Bay Window).
These floor plans have not been drawn to scale.
Check on site for any crucial dimensions.

★ Nails in wall for hanging

WOOD WORKSHOP



Image: Courtesy of Montsalvat

ABOUT

The Wood Workshop is a multi-use space that is adjacent to The Barn Gallery.

Constructed in the 90s during the Barn Gallery's renovation, the Wood Workshop combines the practicality of a functional workspace with the aesthetic appeal of a gallery. It serves as one of our dedicated spaces for showcasing 3D artwork, installations, and experimental practices.

FACILITIES

- Air conditioning.
- Double door access.
- Suitable for 3D work and installation.
- Track hanging system for 2D work.
- Mixed media space capabilities.

ACCESSIBILITY

The Wood Workshop Gallery is located in the upper courtyard close to the toilets and adjacent to the Barn Gallery. It is wheelchair accessible.

-
-

WOOD WORKSHOP



Image: Courtesy of Montsalvat

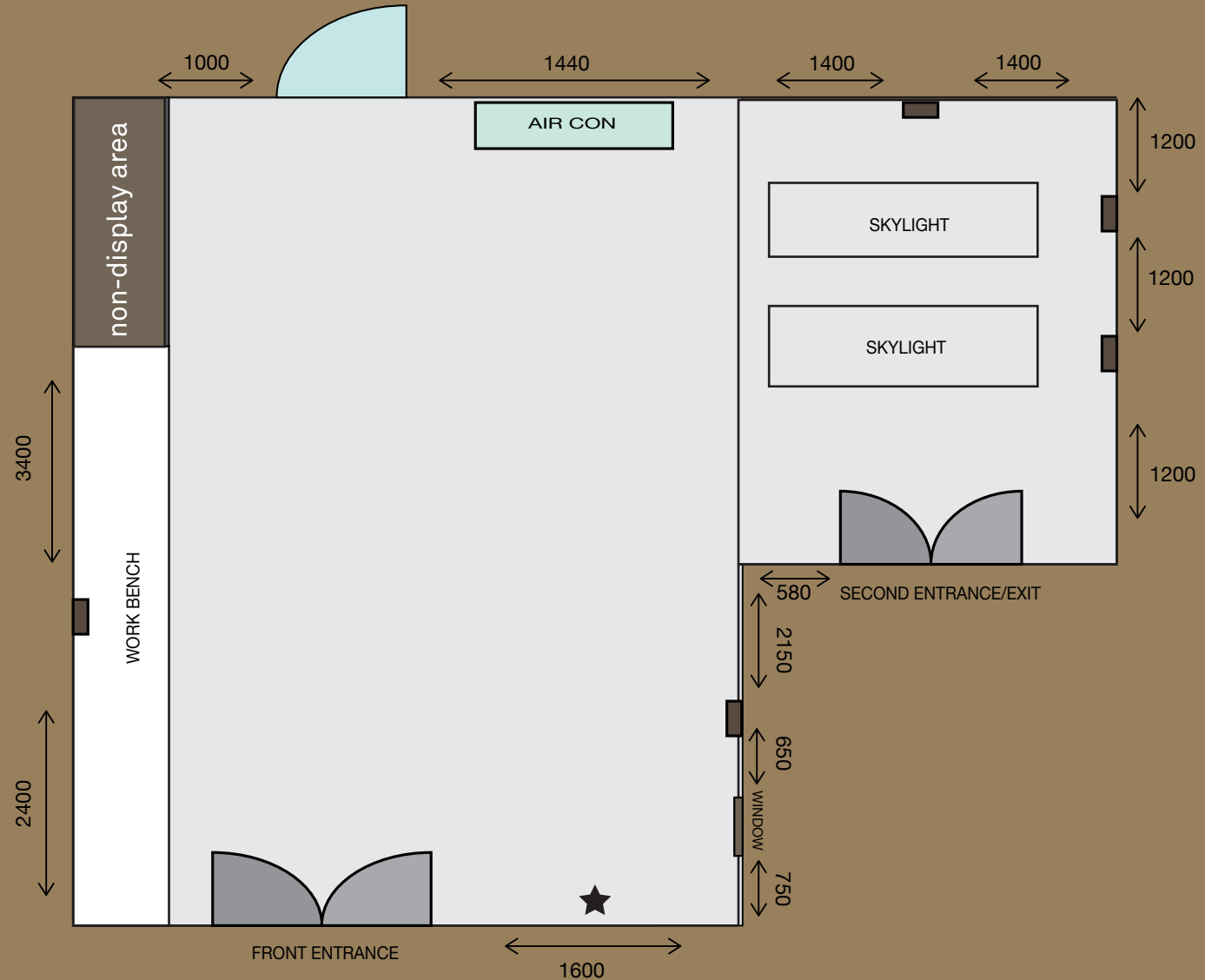
HIRE RATES: Non-exclusive hire (refer to the exhibitor fee page for details).

DURATION: Designated time slots will be provided by the Program Coordinator.

INCLUSIONS FOR THE EXHIBITOR

- Provision of track and gallery hanging system
- Provision of ladders (to be pre-organised with the coordinator)
- Plinths are available for loan/hire
- Sales administration as required
- Marketing copy through online social media channels, Instagram and Facebook, with 25,000+ subscribers
- Printing of artwork room list (catalogue & artist collateral to be organised by exhibitor following proofing from Program Coordinator)
- Administration for artwork sales and online store
- 1 slot in the Montsalvat E-newsletter promotion of 7,500+
- Opening celebrations are optional. Catering arrangements will be outlined by the coordinator.
-

WOOD WORKSHOP



*Dimensions indicate available wallspace.
These floor plans have not been drawn to scale.
Check on site for any crucial dimensions.

★ Nails in wall for hanging

*The ceiling of the Wood Workshop is slanted,
with the highest point on the left. Please take
this into account when hanging 2D artwork.

THE LONG GALLERY



Image: courtesy of Field of Vision Photography

ABOUT

The Long Gallery is a multi-use space that is adjacent to The Ornamental Pond (pool). Designed by Justus Jorgensen, the walls were built approx. c1945, predominantly by Horrie Judd, renowned for his stone and building skills. The salvaged trusses, roof, polished ceramic tile floor, windows and doors make a distinctive Heritage-listed space. This creates a unique experience for exhibitors.

FACILITIES

- Poolside with door access
- Fireplaces (can be lit in colder months for events)
- Track Lighting Gallery Standard
- Track hanging system
- Front and Rear access for accessible installation
- Bar (for events)
- A **multi-use** space for events and programs increasing public traffic
- Supports 2D artwork only
- Kawaii upright piano

ACCESSIBILITY

The Long Gallery has two entrance points at the front and the back of the building. Parking is available at the Long Gallery for wheelchair access, and installation days.

THE LONG GALLERY



Image: courtesy of Field of Vision Photography

****Please note, the Long Gallery is suitable for 2D wall work only.
Plinth hire is not applicable to this gallery space.***

HIRE RATES: Non-exclusive hire (refer to the exhibitor fee page for details).

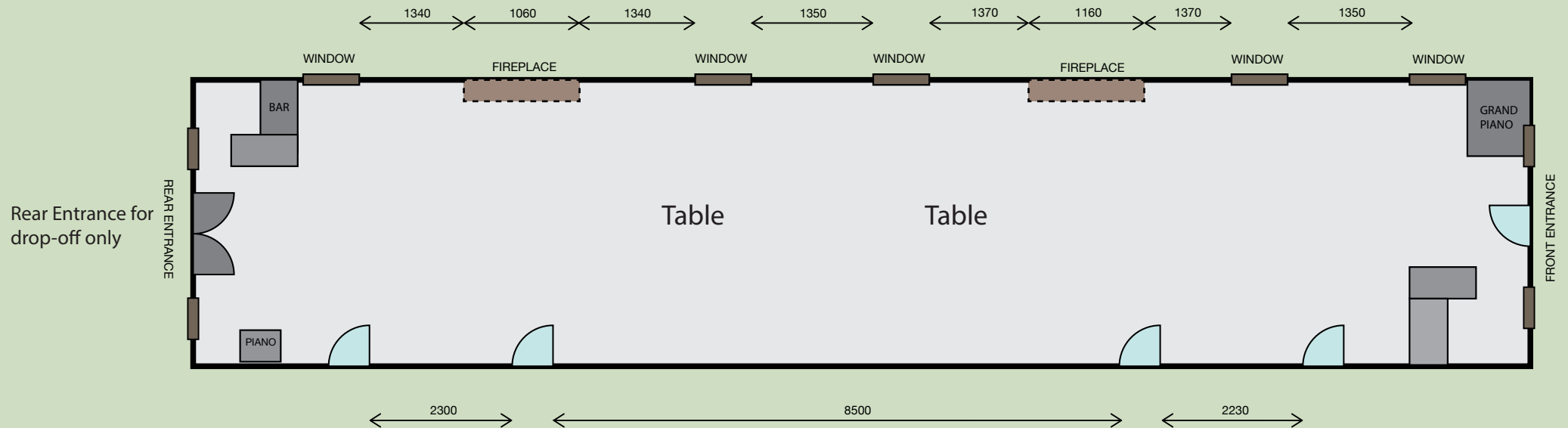
DURATION: Designated time slots will be provided by the Program Coordinator.

INCLUSIONS FOR THE EXHIBITOR

- Provision of track and gallery hanging system
- Provision of ladders (to be pre-organised with the coordinator)
- Plinths are available for loan/hire
- Sales administration as required
- Use of AV equipment: microphone
- Marketing copy through online social media channels, Instagram and Facebook, with 25,000+ subscribers
- Printing of artwork room list (catalogue & artist collateral to be organised by exhibitor following proofing from Program Coordinator)
- Administration for artwork sales and online store
- 1 slot in the Montsalvat E-newsletter promotion of 7,500+
- Opening celebrations are optional. Catering arrangements will be outlined by the coordinator.

THE LONG GALLERY

built c.1945



*Dimensions indicate available wallspace.
These floor plans have not been drawn to scale.
Check on site for any crucial dimensions.

POOL

*This gallery does not support 3D artwork